

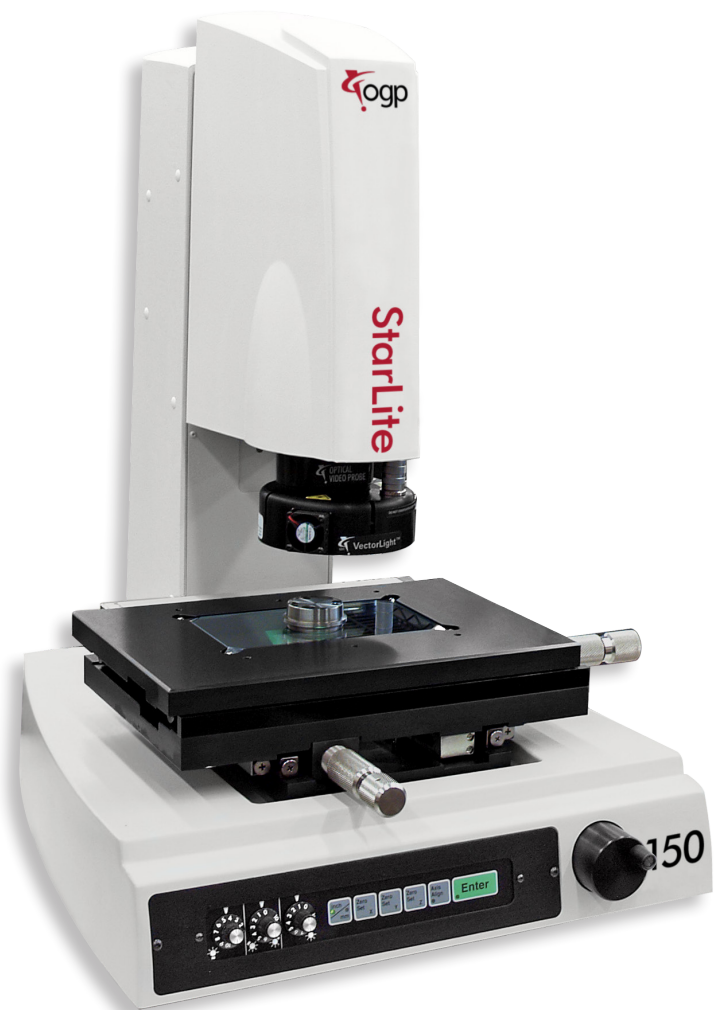


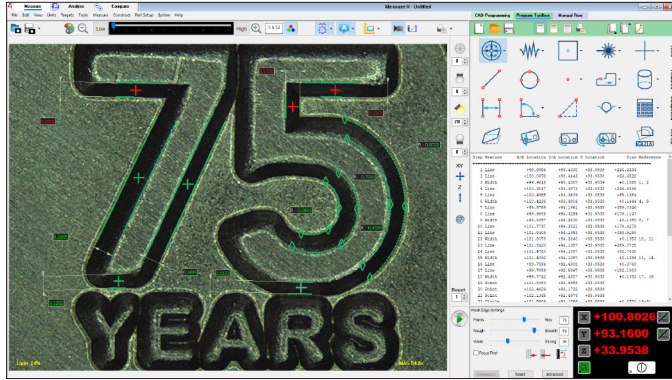
StarLite™ 150

StarLite 150 is compact and reliable video measurement system combining fully automatic measurements with easy to use manual stage motion. StarLite's robust stage, motorized zoom optics and high resolution digital camera provide the accuracy you expect from a high-performance metrology system.

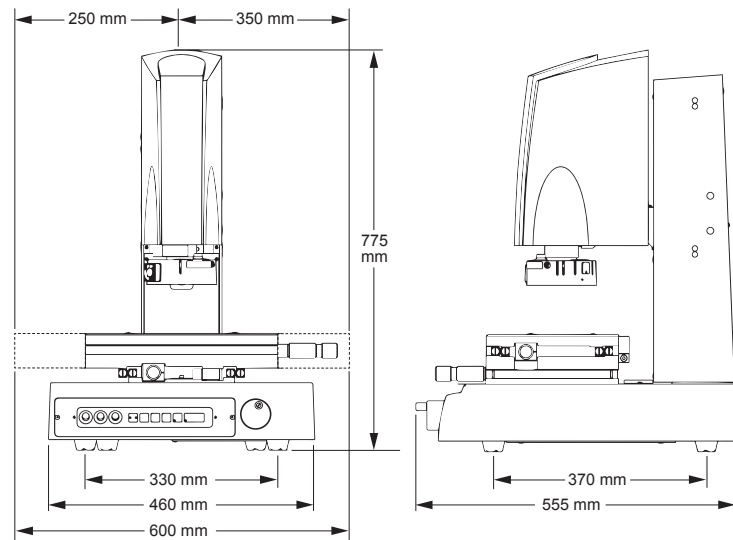
- 3-axis (X, Y, Z) measurement capability.
- Digital megapixel color camera coupled with a motorized zoom lens.
- Programmable all LED backlight, square-on surface light, and VectorLight™ programmable ring light for the ultimate lighting flexibility.

Semi-Automatic, Compact, System that Fits on a Workbench





Measure-X® makes it easy for StarLite to accurately measure fine features that require multi-step measurement routines. Edge measurements are fully automatic. Measure-X guides the user to position each feature using the manual stage controls.



System Weight: 50 kg
Shipping Weight: 155 kg

	Standard	Optional
XYZ Travel	150 x 75 x 125 mm	
XYZ Scale Resolution	1.0 µm	
Drive System	Manual with coarse and fine X, Y, Z position adjustment knobs	
Worktable	Anodized, with fixture holes, removable stage glass, 7 kg recommended max payload	
Optics*	Motorized zoom; 1.0x lens	Lens attachments for 1.0x Lens: 0.5x, 0.75x, 1.5x, 2.0x
Illumination	Substage LED profile, coaxial LED surface, VectorLight LED ring light	
Metrology Camera	Megapixel color digital metrology camera	
Field of View**	7.3 mm x 5.5 mm (low zoom) to 0.5 mm x 0.4 mm (high zoom)	14.6 mm x 11.0 mm (1.0x lens, 0.5x attachment) to 0.27 mm x 0.20 mm (1.0x lens, 2.0x attachment)
Working Distance	62 mm	Up to 133 mm (1.0x lens, 0.5x attachment)
Software	Measure-X Measure and Compare	Measure-X Analyze, Measure-X Offline, EVOLVE® SPC
System Controller	Windows® based, with up-to-date processor and onboard networking/communication ports	
Controller Options		24" flat panel LCD monitor, or dual 24" flat panel LCD monitors, keyboard, 3-button mouse (or user supplied)
Accessories		Foot Switch
Power Requirements	100-120 VAC or 200-240 VAC, 50/60 Hz, 1 phase, 350 W	
Safe Operating Environment	15-30 °C, non-condensing	
Rated Environment	Temperature 18-22 °C, stable to ± 1 °C, max rate of change 1 °C / hour, max vertical gradient of 1 °C / meter; 30-80% humidity; vibration <0.001g below 15 Hz	
XY Area Accuracy	$E_2 = (4.5 + 8L/1000) \mu\text{m}$	
Z Linear Accuracy	$E_1 = (7.0 + 8L/1000) \mu\text{m}$	

Accuracy is evaluated with a QVI® verification procedure where "L" is measured length in millimeters. Specifications apply within the rated environment. Standard optical specifications apply at the maximum digital magnification of the standard configuration. XY Accuracy applies with an evenly distributed load up to 5 kg in the standard measuring plane. The standard measuring plane is defined as a plane that is within 25 mm of the worktable surface. Depending on load distribution, accuracy at maximum payload may be less than standard. This equipment complies with EMC directive EN IEC 61326-1, Class A.
*Lens attachments can be manually interchanged to change magnification and working distance.
**Uses optical and digital zoom.



Confidence. When Results Matter.™

World Headquarters: Rochester, NY, USA • 585.544.0400 • www.ogpnet.com

OGP Shanghai Co, Ltd: Shanghai, China
86.21.5045.8383/8989 • www.smartscope.com.cn

OGP Messtechnik GmbH: Hofheim-Wallau, Germany
49.6122.9968.0 • www.ogpmesstechnik.de

Optical Gaging (S) Pte Ltd: Singapore • 65.6741.8880 • www.smartscope.com.sg