



# SprintMVP

Family of Products

# Versatile Measurement Performance

## Productivity Made Simple

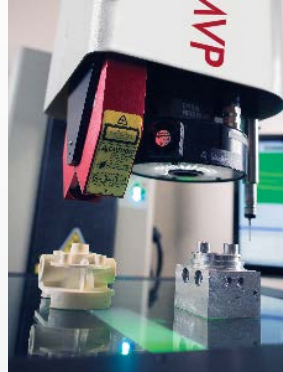
**SprintMVP** systems set the standard for fully automatic 3-axis measurement performance. Rugged granite construction, precision motorized stages and flexible zoom optics handle a wide range of measurement needs.



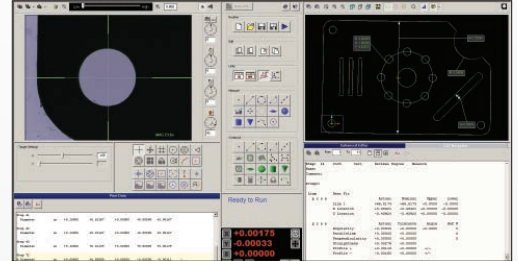
VectorLight™ programmable oblique illuminator highlights surface details from every angle.



Optional rotary indexers automatically index parts for complete measurement of all features.



Optional DRS laser and touch probe offer additional sensor capability for complex measurements.



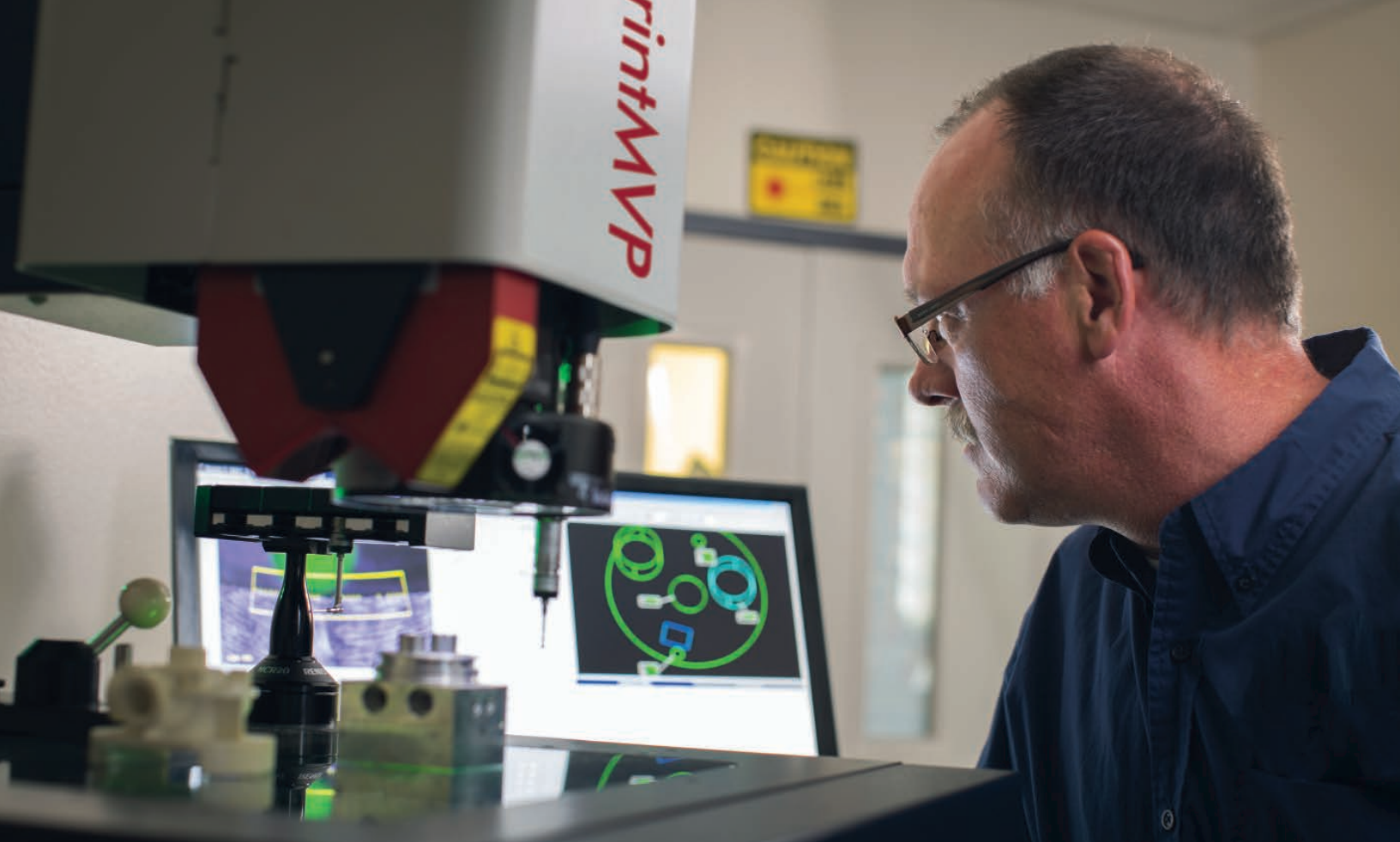
Measure-X® is the world's most popular video metrology software.

## SprintMVP Benchtop Systems

**SprintMVP** benchtop models deliver high productivity on the workbench. With a full range of sensor options, fully automatic operation, and powerful software, SprintMVP systems quickly add value to any manufacturing process. SprintMVP benchtop systems offer extended measuring ranges to accommodate a variety of parts.



		Standard	Optional
Stage Travel (X, Y, Z)	Model		
	250	300 x 150 x 150 mm	250 mm Extended Z Axis
	300	300 x 300 x 150 mm	250 mm Extended Z Axis
Stage Drive System		Compound stepper motorized XY stage and DC servo Z axis with 3-axis joystick control	
Imaging Optics		6.5:1, 10 position motorized zoom lens	Optional add-on lenses: 0.5X, 0.75X, 1.5X and 2.0X
Field of View		Low Mag: 7.3 mm x 5.5 mm High Mag*: 0.5 mm x 0.4 mm	Low Mag (0.5X): 14.6 mm x 11.0 mm High Mag* (2.0X): 0.27 mm x 0.20 mm
Metrology Camera		Digital, Megapixel Color Metrology Camera	
Illumination		LED VectorLight SP programmable ring light with 6 rings and 7 sectors, LED backlight, LED square-on surface light	LED VectorLight SF programmable ring light with 6 rings and 8 sectors and LED square-on surface light (reduced working clearance)
Sensors			TP20 touch probe and change rack, off-axis DRS laser
*Uses optical and digital zoom			



## SprintMVP Large Capacity Systems

**SprintMVP** large capacity floor models extend measurement capability to large parts or large batches of smaller parts. SprintMVP floor models feature heavy-duty construction and stable materials for use in harsh shop-floor conditions.

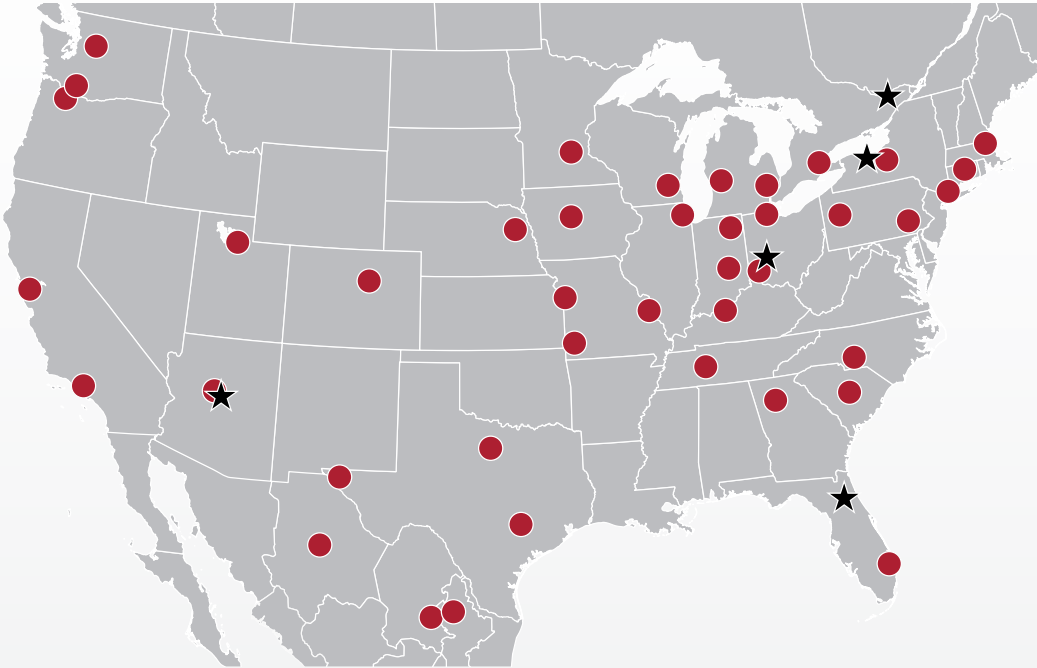


		Standard	Optional			
Stage Travel (X, Y, Z)	Model					
	400	450 x 450 x 150 mm		450 x 450 x 300 mm		
	600	610 x 450 x 150 mm				
	624	624 x 624 x 200 mm		624 x 624 x 300 mm		
	1500	900 x 1500 x 200 mm		900 x 1800 x 200 mm	900 x 2000 x 200 mm	900 x 1500 x 300 mm
	1550	1250 x 1500 x 200 mm		1250 x 1800 x 200 mm	1250 x 2000 x 200 mm	1250 x 1500 x 300 mm
	1552	1500 x 1500 x 200 mm			1500 x 2000 x 200 mm	1500 x 1500 x 300 mm
Stage Drive System		Models: 400, 600: Precision, compound motorized XY stage and linear Z stage with 3-axis joystick control Models: 624, 1500, 1550, 1552: Moving bridge style XYZ transport, with dual Y-axis drives and scales				
Imaging Optics		Motorized 6.5:1 zoom lens system		Optional add-on lenses: 0.5X, 0.75X, 1.5X and 2.0X		
Field of View		Low Mag: 7.3 mm x 5.5 mm High Mag*: 0.5 mm x 0.4 mm		Low Mag (0.5X): 14.6 mm x 11.0 mm High Mag* (2.0X): 0.27 mm x 0.20 mm		
Metrology Camera		Digital, Megapixel Color Metrology Camera				
Illumination		LED VectorLight SP programmable ring light with 6 rings and 7 sectors, LED backlight, LED square-on surface light		LED VectorLight SF programmable ring light with 6 rings and 8 sectors and LED square-on surface light (reduced working clearance)		
Sensors				TP20 touch probe and change rack, off-axis DRS laser		
*Uses optical and digital zoom						

# Global Sales & Support Offices



## North and South America



### Support Office Locations: Americas

- Rochester, NY, USA
- Dayton, OH, USA
- Gainesville, FL, USA
- Tempe, AZ, USA
- Ottawa, Canada

### Europe

- Budapest, Hungary
- Hofheim-Wallau, Germany
- Turin, Italy

### Asia

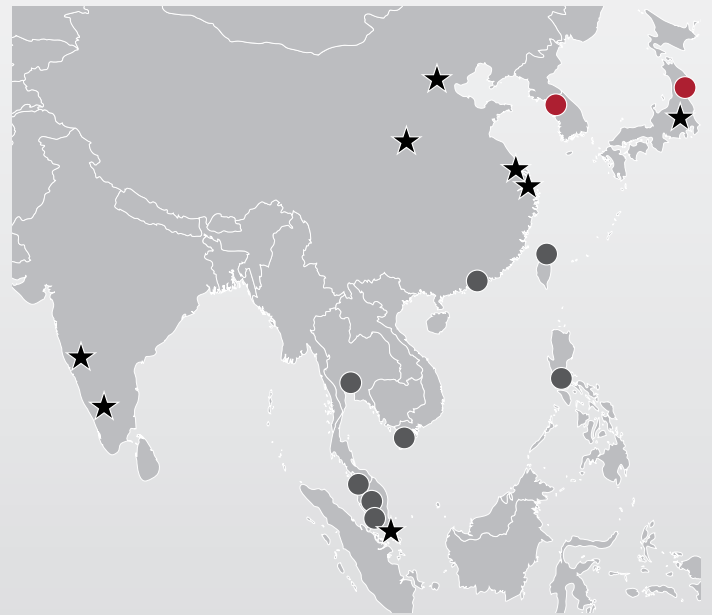
- Beijing, Shanghai, Suzhou, Xi'an, China
- Bengaluru & Pune, India
- Singapore
- Tokyo, Japan

## Europe and Africa



- Israel
- South Africa

## Asia



- Australia
- Indonesia



Optical Gaging Products, a division of Quality Vision International

850 Hudson Avenue • Rochester, NY 14621 • USA

Phone: (585) 544-0400 • (800) 647-4243 • Fax: (585) 544-8092

info@ogpnet.com

www.ogpnet.com