



SprintMVP™ 1500 | 1550 | 1552

SprintMVP 1500 series measurement systems offer fully automatic, non-contact measurement for very large parts or groups of parts. An impressive list of standard features make these systems a great value. Trust SprintMVP systems for accurate, repeatable measurements.

- Moving bridge design, for convenient part loading and fixturing.
- Motorized zoom lens system with high resolution digital color camera.
- Full function Measure-X® metrology software for fully automatic operation.

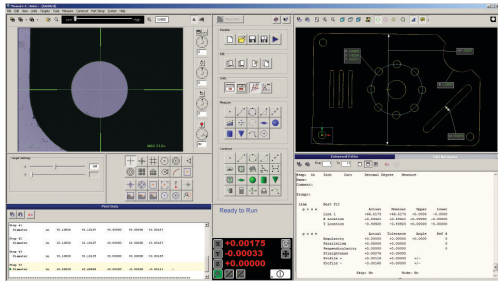
| SprintMVP Measuring Ranges (mm) | | | | |
|---------------------------------|------|------|------|-----|
| | | X | Y | Z |
| Models | 1500 | 900 | 1500 | 200 |
| | 1550 | 1250 | 1500 | 200 |
| | 1552 | 1500 | 1500 | 200 |

Extra Large Capacity Measurement System



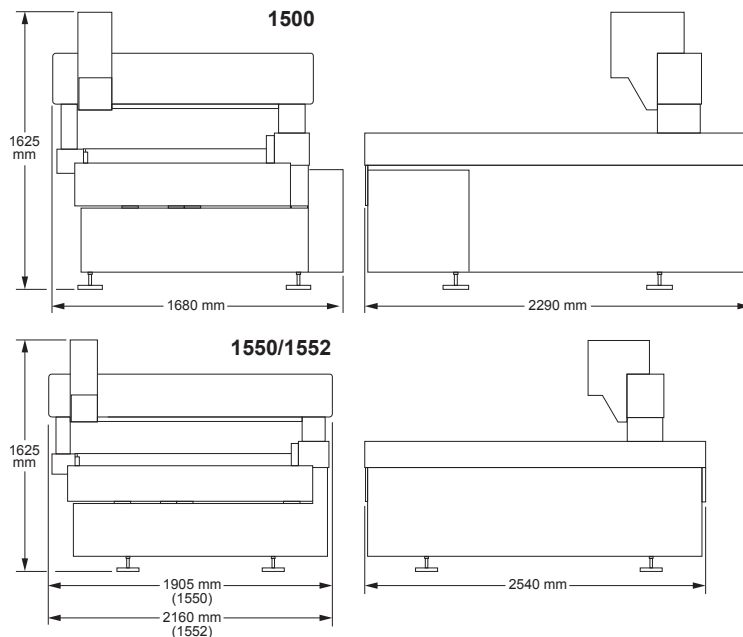
SprintMVP 1500 model shown.

SprintMVP™ 1500|1550|1552



Measurement Software

Measure-X is the world's most popular video metrology software. Measure-X makes it easy for SprintMVP to accurately measure fine features that require multi-step measurement routines, automatically combining autofocus, edge detection, programmable lighting, laser scanning and touch probing.



| System Weight: | | Shipping Weight: | |
|----------------|----------|------------------|----------|
| 1500 Model: | 2,590 kg | 1500 Model: | 3,000 kg |
| 1550 Model: | 5,460 kg | 1550 Model: | 6,260 kg |
| 1552 Model: | 6,380 kg | 1552 Model: | 7,280 kg |

| | | Standard | | Optional | |
|----------------------------------|------|---|-----------------|---|-------------------|
| X, Y, Z Travel | 1500 | 900 x 1500 x 200 mm | | | |
| | 1550 | 1250 x 1500 x 200 mm | | | |
| | 1552 | 1500 x 1500 x 200 mm | | | |
| X, Y, Z Scale Resolution | | 0.5 µm | | | |
| Stage Drive System | | Moving bridge style XYZ transport, with dual Y-axis drives and scales | | | |
| Max Recommended Stage Load | | 100 kg | | | |
| Working Distance | | 62 mm (with standard VectorLight™) | | Up to 133 mm (0.5x lens attachment) | |
| Imaging Optics | | 6.5:1, 10 position motorized zoom lens | | | |
| Lens Attachments | | 0.5x, 0.75x, 1.5x, 2.0x | | | |
| Field of View (mm) | | Low Mag | High Mag* | Low Mag (0.5X) | High Mag* (2.0x) |
| *Uses optical and digital zoom | | 7.3 mm x 5.5 mm | 0.5 mm x 0.4 mm | 14.6 mm x 11.0 mm | 0.27 mm x 0.20 mm |
| Metrology Camera | | Digital Megapixel Color Metrology Camera | | | |
| Magnification on 24" LCD Monitor | | 24x to 370x on-screen digital/optical magnification standard with full feature Measure-X layout | | 12x to 740x on-screen digital/optical magnification with optional add-on lenses and dual monitor user interface | |
| Illumination | | LED VectorLight SP programmable ring light with 6 rings and 7 sectors, LED backlight, LED square-on surface light | | LED VectorLight SF programmable ring light with 6 rings and 8 sectors and LED square-on surface light (reduced working clearance) | |
| Sensor Options | | Touch Probe and change rack, DRS™ Laser | | | |
| Controller | | Standard system controller with networking and communication ports | | Single flat panel LCD monitor, or dual flat panel LCD monitors; keyboard, mouse | |
| Software | | Measure-X | | MeasureFit® Plus, CAD interface, SmartProfile®, OGP® EVOLVE® SPC | |
| Miscellaneous Options | | Rotary indexer, digital I/O capability | | | |
| Power | | 100-120 VAC or 200-240 VAC, 50/60 Hz, 1 phase, 750W | | | |
| Operating Environment | | Temperature 15-30 °C, non-condensing | | | |
| Rated Environment | | Temperature 18-22 °C, stable to ± 1 °C, max rate of change 1 °C / hour, max vertical gradient of 1 °C / meter; 30-80% humidity; vibration <0.001g below 15 Hz | | | |
| XY Area Accuracy | | E _x : (5.0 + 6L/1000) µm (1500 Model) E _y : (5.5 + 6L/1000) µm (1550 Model) E _z : (8.5 + 6L/1000) µm (1552 Model) | | | |
| Z Linear Accuracy | | E _z : (5.0 + 8L/1000) µm | | E _z : (4.0 + 8L/1000) µm (requires optional 2.0x lens attachment) | |

Accuracy is evaluated with a QVI verification procedure where "L" is measured length in millimeters. Specifications apply within the rated environment. Standard optical specifications apply at the maximum optical magnification of the standard configuration. XY Accuracy applies with an evenly distributed load up to 10 kg in the standard measuring plane. The standard measuring plane is defined as a plane that is within 25 mm of the worktable surface. Depending on load distribution, accuracy at maximum payload may be less than standard.



Confidence. When Results Matter.™

World Headquarters: Rochester, NY, USA • 585.544.0400 • www.ogpnet.com

OGP Shanghai Co, Ltd: Shanghai, China
86.21.5045.8383/8989 • www.smartscope.com.cn

OGP Messtechnik GmbH: Hofheim-Wallau, Germany
49.6122.9968.0 • www.ogpmesstechnik.de

Optical Gaging (S) Pte Ltd: Singapore • 65.6741.8880 • www.smartscope.com.sg